

# KMG7

# *Advanced*

User's Manual

Version 1.0

*Studio Major7th*

(C) 2016 Studio Major7th

**Thank you for using the KMG7 Advanced.  
This is a manual of KMG7 Advanced.**

**KMG7 Advanced runs in KONTAKT version 4.2 or higher. In KONTAKT PLAYER, there is a limit to the available time.**

**You will be able to commercially use KMG7 Advanced.  
However, you do not have the right to distribute secondary the KMG7 Advanced.**

**Please observe the rules. Let's make music happily.**

Studio Major7th

# KMG7 Advanced GUI

KMG7 Advanced has three GUI.

The first is "MAIN" field.

The second is "Play Mode" field.

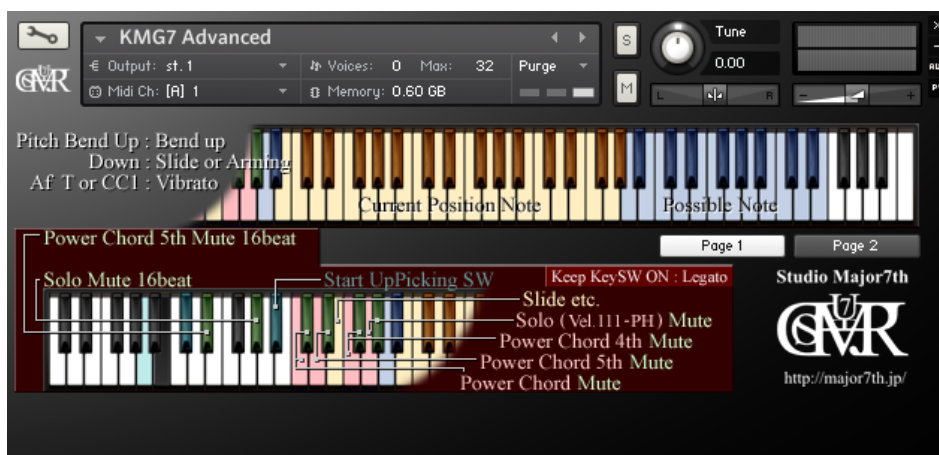
The third is "Manual" field.



You can control the basic sound in the MAIN tab.



You can view the fretboard, and control some items in the Play Mode tab.



You can view the simple manuals in the Manual tab. This tab has two pages.

# How to control the GUI

In the MAIN tab, The configuration of KMG7 Advanced's sound making is as follows.

In EQ (Basic guitar sound making and ON or OFF)



DRIVE (Gain, Cabinet and ON or OFF)



Cabinet Settings (Select type, Set size)



EQ (Re-making sound)



STEREO (ON or OFF)



Other Effects (Chorus, Delay, Reverb and ON or OFF)



Master VOLUME

**If you use a external amp simulator, we would recmmend that Switches of DRIVE, STEREO, and Other Effects are OFF.**

**In the Play Mode tab, you can set some controller besides viewing fretboard.  
The details are as follows.**

### **SoLock**

**When this button is ON, you can select only Solo sound types. These are G#0, E1, G1 and G#1.**

### **Load 16beat**

**When this button is ON, samples of 16beat sound is loaded. If this button is OFF, samples is unloaded.**

### **PB Dn Controller (Pitch Bend Down Controller)**

**You can select the Switch (Slide or Arming) that decides what you control with Pitch Bend Down Controller.**

### **Vib Controller (Vibrato Controller)**

**You can select the Switch (CH.AfT, MOD.W) to decide what to control Vibrato.**

### **<Warning>**

**If 0 fret sound was bended, played with Pick Harmonics, it is displayed warning here.**

### **Noise Vol (Noise Volume)**

**You can control the Volume of the Auto String Noise.**

### **PB Down (Pitch Bend Down)**

**You can control the value of the Pitch Bend Down.**

### **PB Up (Pitch Bend Up)**

**You can control the value of the Pitch Bend Up.**

## **Vibrato**

**You can control the depth value of the interval when sound is Vibrato.**

## **V Rate (Vibrato Rate)**

**You can control the Vibrato speed.**

**"T" is 'Triplet'.**

# How to use KMG7 Advanced

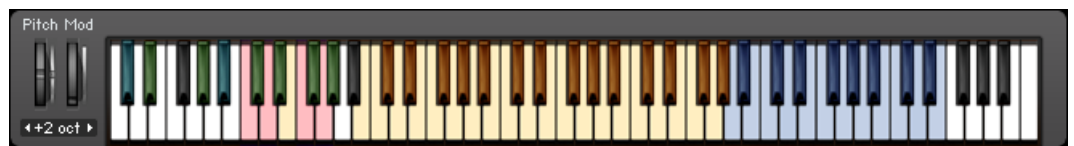
KMG7 Advanced has two types of key switches.  
These are to select sounds Key Switches and  
to select string Key Switches.

Sound keys have been set from B1 key to E7 key.  
Key switches have been set from A-1 key to G#1 key.

Let's learn the functions of each keys.

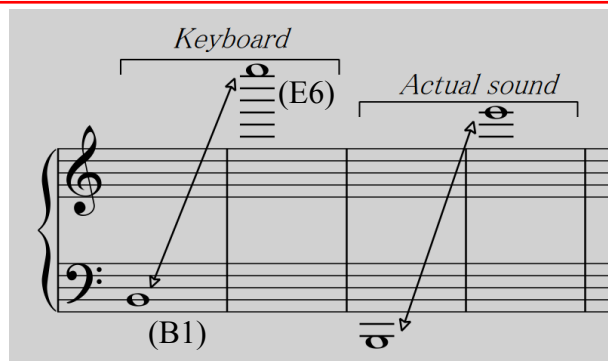
From B1 key to E7 key

You can play the sound of the KMG7 Advanced.



Actual sound is from  
B0 to E5, and has been  
set from B1 key to E6  
key.

Other various sounds  
have been set from  
F6 key to E7 key.

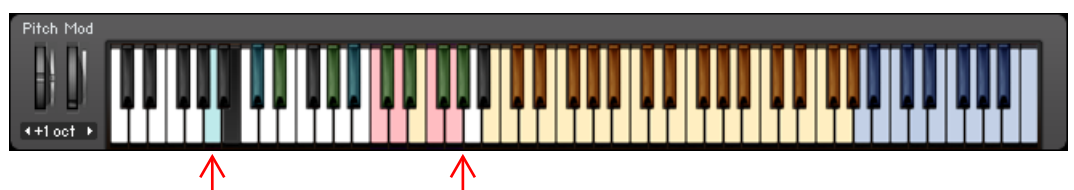


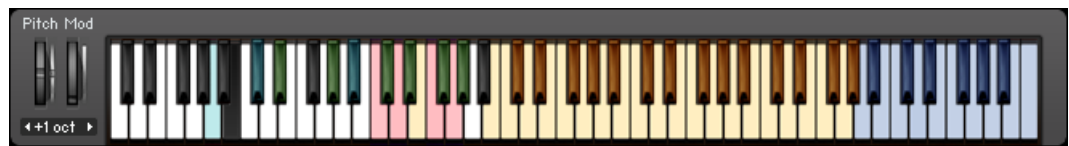
D#0, G#0, C1 - G#1 key

If you press this key switch, can select sound type.

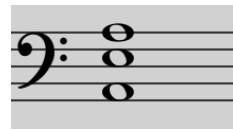
C0 D0 E0 ... B0 Key

You can select string.





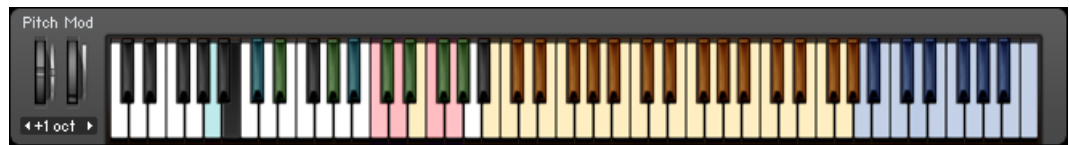
(A2)



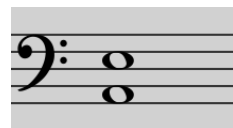
### Key Switch C1 and C#1

**C1 is Octave Power Chord Key Switch.**

**C#1 is its Bridge Mute sound.**



(A2)



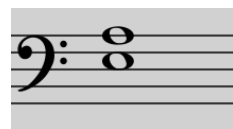
### Key Switch D1 and D#1

**D1 is Perfect 5th Power Chord Key Switch.**

**D#1 is its Bridge Mute sound.**



(A2)



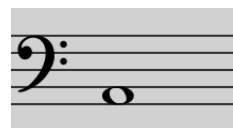
### Key Switch F1 and F#1

**F1 is Perfect 4th Power Chord Key Switch.**

**F#1 is its Bridge Mute sound.**



(A2)



### Key Switch G1 and G#1

**G1 is Solo tone Key Switch.**

**G#1 is its Bridge Mute sound.**





(A2)



## Key Switch D#0

D#0 is Key Switch that is 16 beat sound of Perfect 5th Power Chord Bridge Mute.

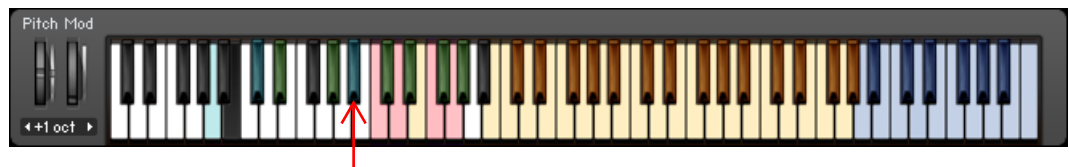


(A2)



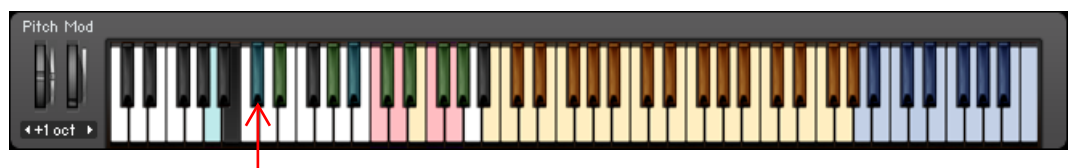
## Key Switch G#0

G#0 is Key Switch that is 16 beat sound of Bridge Mute of Solo tone.



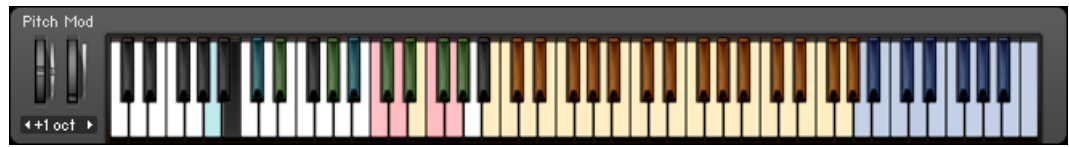
## Key Switch A#0

If you press this key, next picking is started with Up Picking when Key Switch is selected Bridge Mute of Solo tone (G#1).



## Key Switch C#0

While C#0 is pressed, Strings Noise (ASN = Auto String Noise) is muted.



## From B-1 to B0

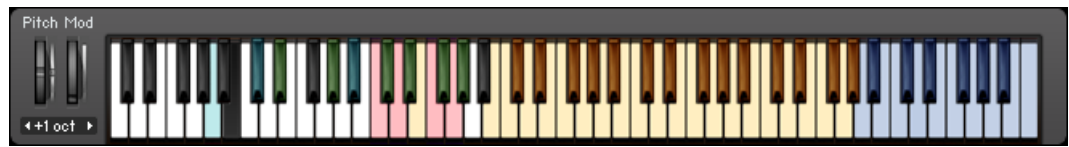


When these keys will be pressed, KMG7 Advanced decides the string to next play.

C0 is 1st string, D0 is 2nd string, ... B0 is 7th string.

Also, if you press the B-1 key at the same time, the string select will be locked.

After that, you can unlock string select by pressing the from B-1 to B0 again.



## Key Switch A-1 (The lowest key of the Piano)

If panic occurs (for example, the sound does not stop), you should press this key.

This key stops the all sounds when you release it.

## About the Velocity

KMG7 Advanced has two velocity layers.  
The sound will become brighter as the velocity value increases.

When Key Switch is the G1 (Solo sound), it is low noise sound and fast attack time in velocity from 1 to 100.  
From 101 to 110 are noisy attack and strong sound.  
However attack time is a bit slow. So we recommend setting the note a bit early.  
From 111 to 126 are Pick Harmonics. It gradually changes.  
127 is the perfect Pick Harmonics sound.

When Key Switches of Power Chord types are selected, it is the slow attack time sound in velocity from 1 to 99.  
Sound starts a little noisy.  
From 100 to 127 are fast attack time and strong sound.

Solo sound	Power Chord types
127 Perfect Pick Harmonics	127
126 Pick Harmonics	Normal sound, attack time is fast.
111	
110 Sound starts a little noisy. Attack time is a bit slow.	
101	100
100	99
Normal sound, attack time is fast.	Sound starts a little noisy. Attack time is a bit slow.
1	1

All of the Key Switches have a fast attack time when the velocity is 100.  
So we would recommend that you input velocity 100 in normal case.

# How to Legato play

KMG7 Advanced can play Legato sound.

The way to do this is to keep pressing Key Switches and to connect two keys and play.

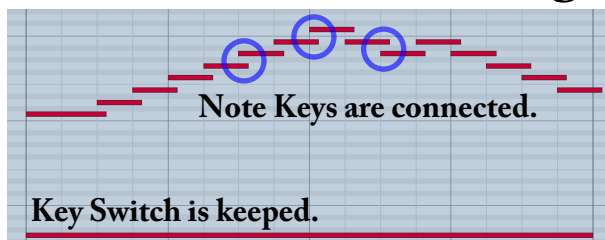
Example, you keep pressing the G1 key and play the key connected.

Legato performance is possible by turning on the Sustain Pedal (CC64) instead of keeping the Key Switches pressed. And as normal, while the Sustain Pedal is on, the sound will not stop.

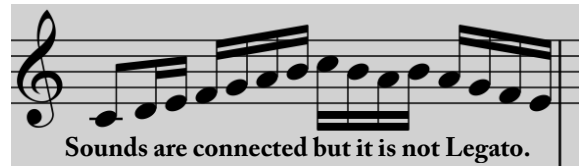
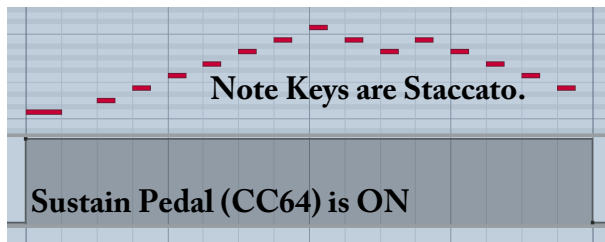
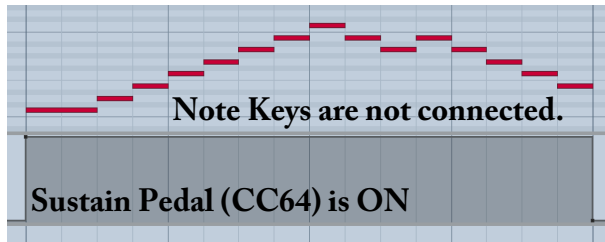
## Non Legato



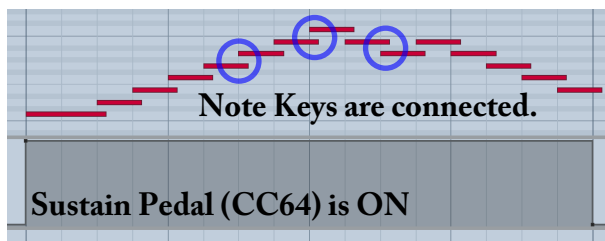
## Legato



## Non Legato



## Legato



## Other Sounds

### Bending

KMG7 Advanced can play the Bending Up by Pitch Bend Controller Up.

When Play Mode tab's PB Dn Controller is 'Slide', Pitch Bend Controller Down plays 'Slide'. If it is 'Arming', play style is also 'Arming'.



### Vibrato

KMG7 Advanced can play the Vibrato by Modulation Controller (CC1) or Channel After Touch.

When Play Mode tab's Vib Controller is "CH.AfT", Vibrato is played by Channel After Touch. If it is "MOD.W", Vibrato is played by Modulation Controller (CC1).

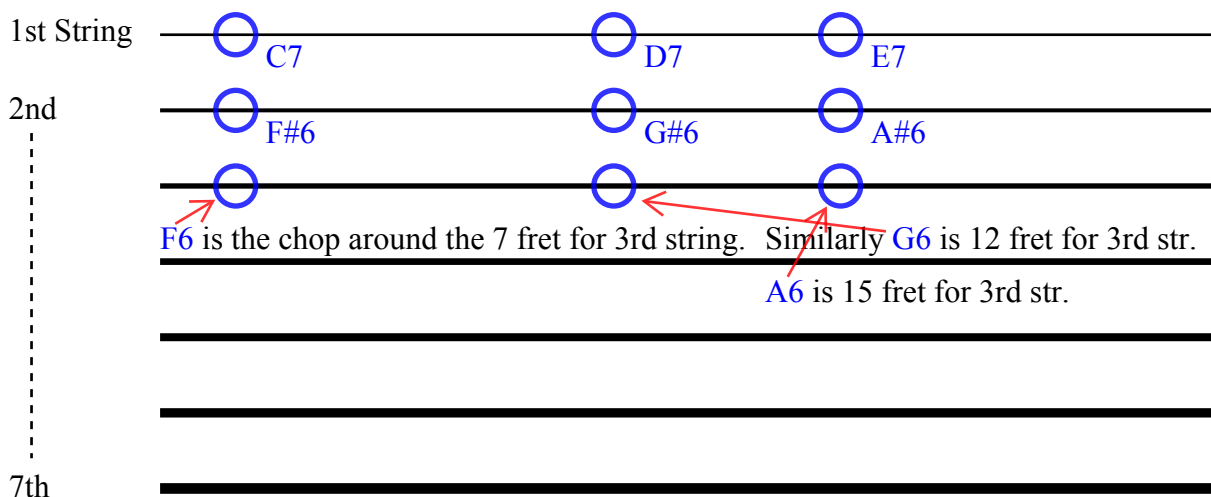
### Unison Bend

KMG7 Advanced can play Unison Bend. The way is pressing two sound keys at the same time. But then the higher note should be E5 key or higher.

## Chop

**KMG7 Advanced can play Chop.**

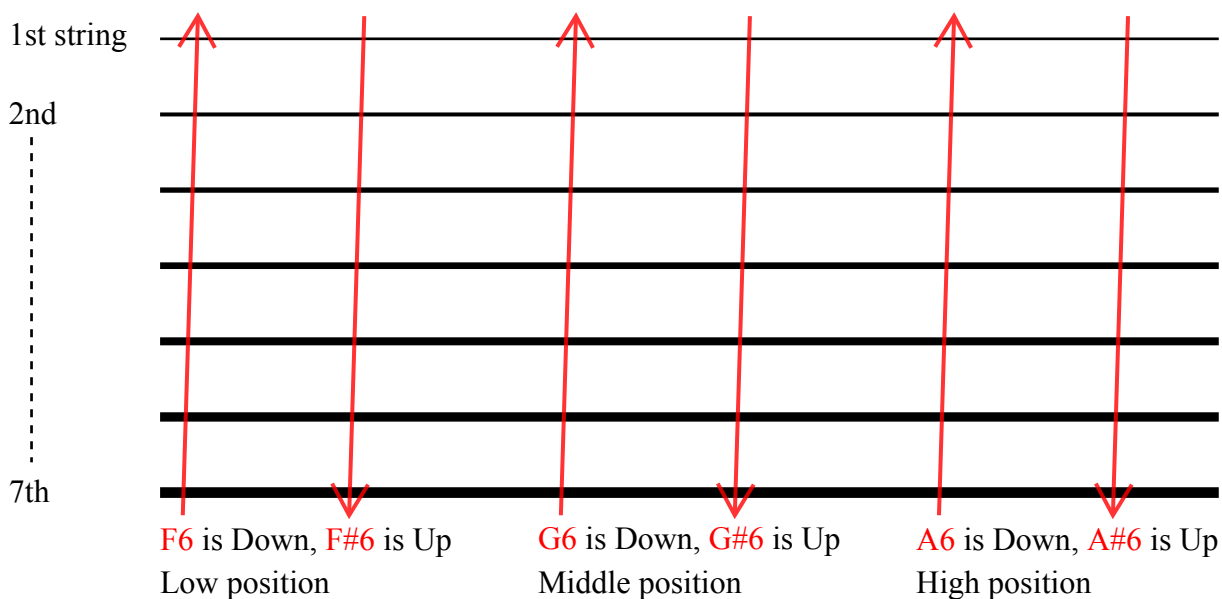
**When Solo sound is Selected, from F6 key to E7 key are Chop sounds.**



## Brushing

**KMG7 Advanced can play Brushing.**

**The Brushing play is assigned to from F6 key to A#6 key.**



## **String Noise**

**KMG7 Advanced can sound String Noise.**

**When Octave Power Chord or Perfect 5th Power Chord are Selected, A1 and A#1 sound the String Noise.**

**When Play Mode tab's 'Noise Vol' knob is 1 or higher, String Noise sounds if you play Power Chord types.**

## **Sound Effects**

**When it is selected Key Switch E1, KMG7 Advanced play Sound Effect.**

**It is set Pick Noise from B1 to A3. And other sounds are set on B3 - B4.**



## Multi Input

KMG7 Advanced supports multi-script that are called 'Multi Input' by us.

So it can control two NKI or higher and can make various sounds.

If you want to use 'Multi Input', please open the file of ".nkm". And open some KMG7 Advanced NKI files there.

As important notice, please **set NKI's channel 2**. Your **operation channel is 1**.

You can play multiple NKIs simultaneously by operating channel 1.

**KMG7 Advanced was produced by Studio Major7th in 2016.  
Version 1.0.0 was released in November of the same year.**

**(C) 2016 Studio Major7th**